



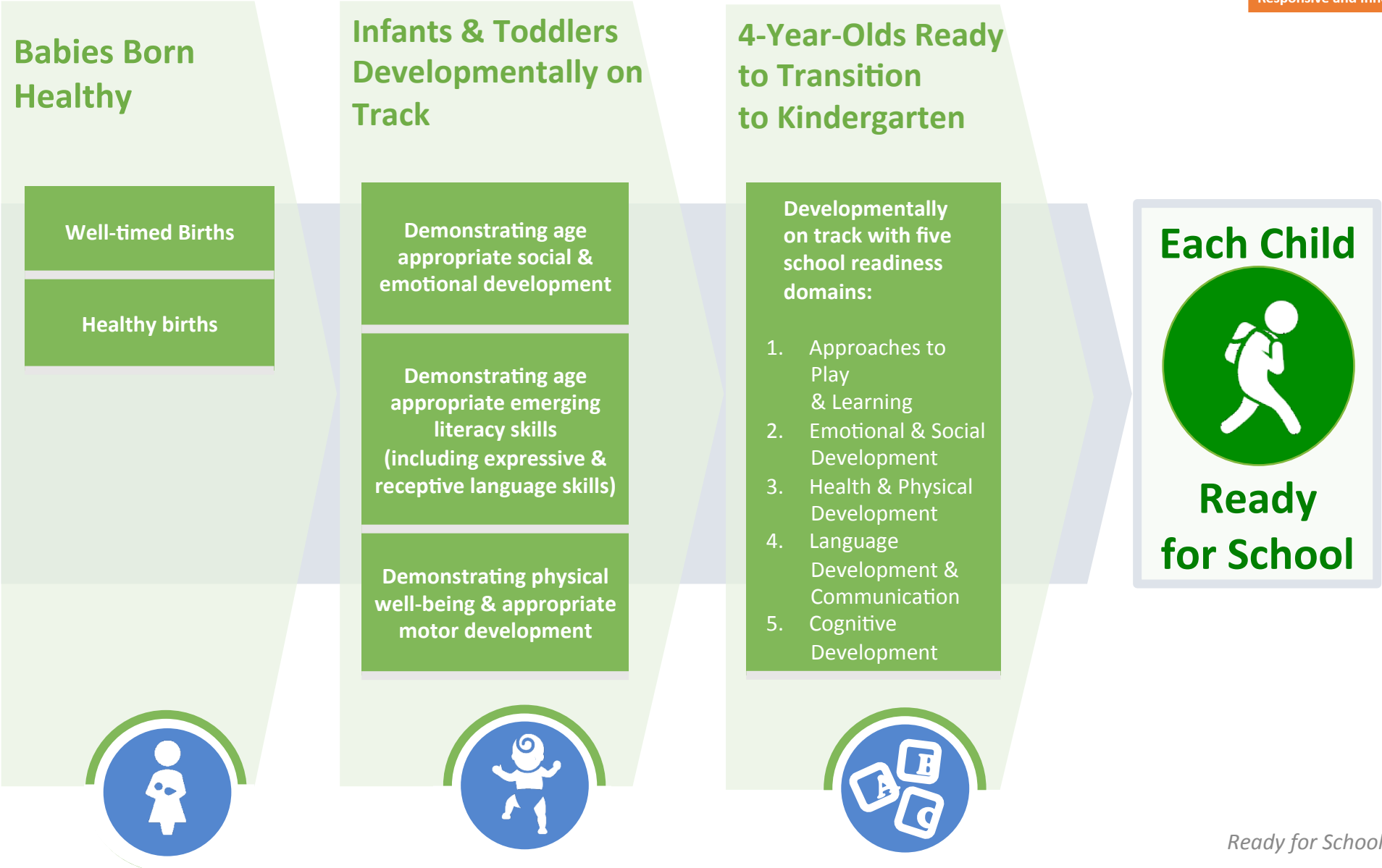
The Pathway to School Success



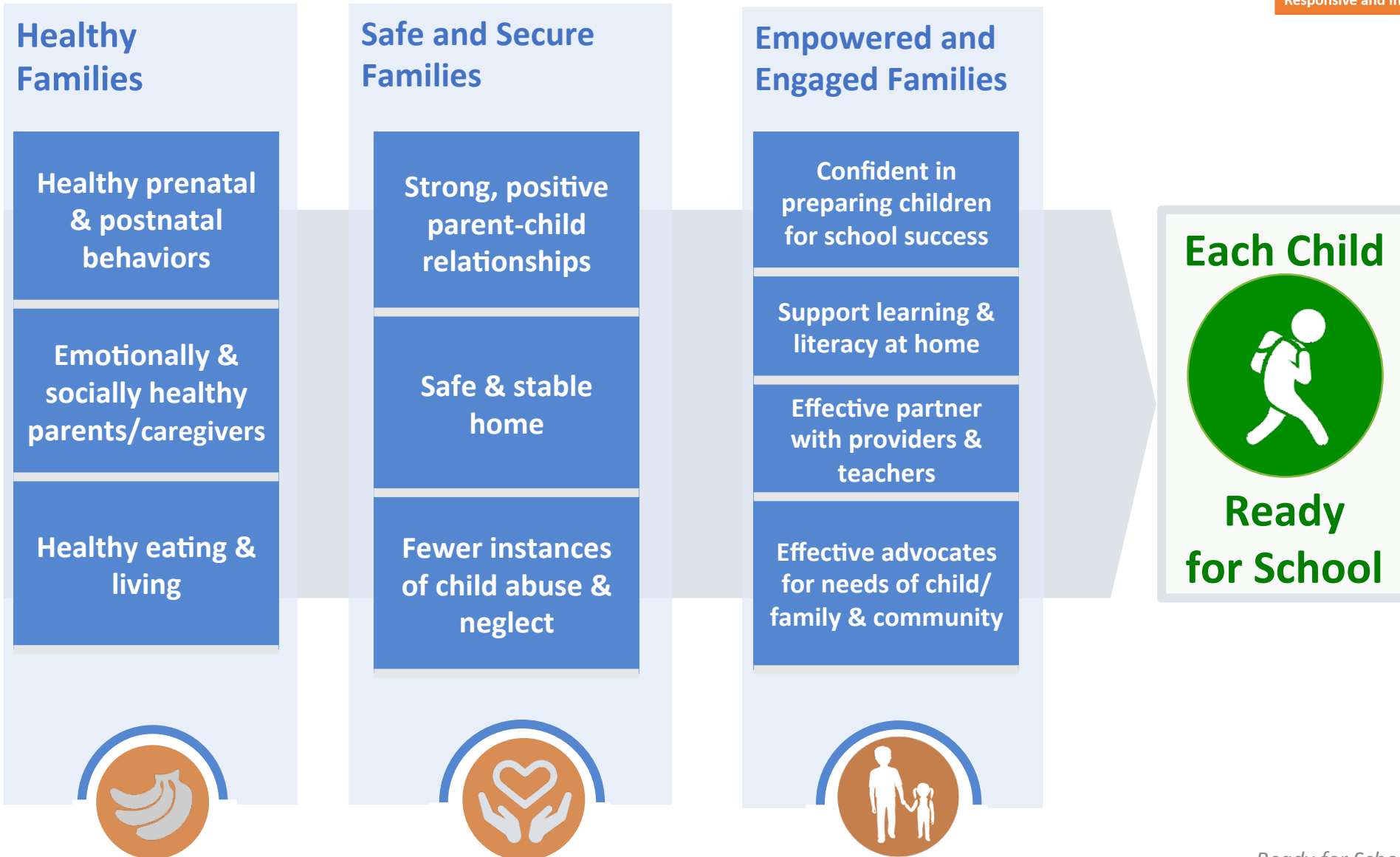
It Takes Ready Children...



Pathway for Success
Supportive and Supported Families
Responsive and Innovative Early Childhood System



It Takes Supportive Families...



...and Supported Families



Sufficient Quality Supports Available

FOR CHILDREN

Children have yearly wellness checks & developmental screenings

Children in high-quality, affordable early learning settings

FOR FAMILIES

Basic needs are met

All new parents connected to parenting supports

Families connected to preventive health/mental health services

Each Child



Ready for School



It Takes a Responsive & Innovative Early Childhood System



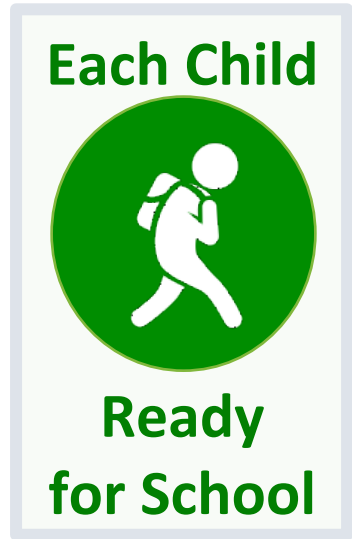
Aligned & Accountable Policies & Programs

- Easy access to needed programs
- Equitable, aligned policies & practices
- Effective coordination & referral network
- Responsive to & respectful of family needs & voice
- Capable formal & informal providers
- Local resources leveraged & expanded to meet needs



Foundation for Community Action

- Shared vision & goals
- System awareness & understanding
- Public demand for kindergarten readiness
- Continuous improvement orientation



And It Takes All Of It (and All of Us) Working Together



Supportive and Supported Families

Responsive and Innovative Early Childhood System

Get the details in the following pages

BABIES BORN HEALTHY

FRAMEWORK ELEMENT

PRIORITIZED OUTCOMES

Well-timed births

- Fewer teen births

Healthy births

- Lower infant mortality rate
- Fewer pre-term births (at least 37+ weeks of gestation)
- Fewer low birth weights (<5.5 lbs.)
- Fewer newborns with narcotics or other substances in system

INFANTS & TODDLERS DEVELOPMENTALLY ON TRACK

FRAMEWORK ELEMENT

PRIORITIZED OUTCOMES

Infants & toddlers developmentally on track

- More children demonstrate age-appropriate emotional & social development
- More children demonstrate age-appropriate emerging literacy skills (including expressive & receptive language skills)
- More children demonstrate physical well-being & appropriate motor development

4-YEAR-OLDS READY TO TRANSITION TO KINDERGARTEN

FRAMEWORK ELEMENT

PRIORITIZED OUTCOMES

4-year-olds ready to transition to kindergarten

- More children are developmentally on track with five school readiness domains: Approaches to Play & Learning; Emotional & Social Development; Health & Physical Development; Language Development & Communication; and Cognitive Development

HEALTHY FAMILIES

FRAMEWORK ELEMENT

PRIORITIZED OUTCOMES

Healthy prenatal & postnatal behaviors

- Sexually active teens use safe sex practices more often
- More women receive adequate prenatal care
- More children breastfed for at least 6 months

Emotionally & socially healthy parents/caregivers

- Adults report fewer poor mental health days
- All pregnant & new mothers screened/referred for maternal depression
- Parents who need mental health/substance abuse treatment receive quality services

Healthy eating & living

- More children live in food secure homes
- More families eat fruits, vegetables & lean protein at recommended levels
- More children play outside every day

SAFE & SECURE FAMILIES

FRAMEWORK ELEMENT

PRIORITIZED OUTCOMES

Strong, positive parent-child relationships

- More families report being attuned to their child's needs
- More parents & children have strong, positive bonds

Safe & stable home

- Fewer families move more than one time each year
- Fewer families experience homelessness
- Fewer families experience severe housing problems
- More children and families live in safe neighborhoods
- Fewer children live below 200% of the federal poverty level

Fewer instances of child abuse & neglect

- Fewer substantiated child abuse cases

EMPOWERED & ENGAGED FAMILIES	
FRAMEWORK ELEMENT	PRIORITIZED OUTCOMES
Confident in preparing children for school success	<ul style="list-style-type: none"> • More families are knowledgeable about the five school readiness domains • More families report confidence in their ability to prepare their child for school
Support literacy & learning at home	<ul style="list-style-type: none"> • More families read to their child daily starting at birth • More parents actively support learning at home
Effective partner with providers & teachers	<ul style="list-style-type: none"> • More families have the skills to effectively partner with providers and teachers • More providers and teachers report that families are effective partners.
Effective advocate for needs of child/family & community	<ul style="list-style-type: none"> • More families have the skills to effectively advocate for the needs of their child, family & community • More providers & stakeholders report that families are effective partners

SUFFICIENT QUALITY SUPPORTS AVAILABLE FOR CHILDREN

FRAMEWORK ELEMENT	PRIORITIZED OUTCOMES
Children have yearly wellness checks & developmental screenings	<ul style="list-style-type: none"> • More children have annual wellness checks • More children have appropriate developmental screenings • More medical providers conduct developmental screenings during annual wellness checks
Children in high-quality, affordable early learning settings	<ul style="list-style-type: none"> • Sufficient quality early learning programs exist to meet local needs • Sufficient quality early learning tools and supports exist for families whose children are not in formal early childcare settings

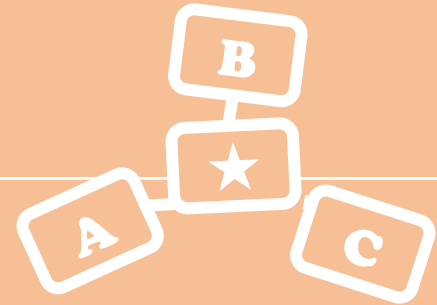
SUFFICIENT QUALITY SUPPORTS AVAILABLE FOR FAMILIES

FRAMEWORK ELEMENT	PRIORITIZED OUTCOMES
Basic needs are met	<ul style="list-style-type: none"> • More parents report that their family's basic needs are met • Sufficient quality programs exist to meet local needs for basic necessities
All new parents connected to parenting supports	<ul style="list-style-type: none"> • All new parents are referred to parenting supports • Sufficient quality programs and supports exist to meet local needs of new parents
Families connected to preventive health/mental health services	<ul style="list-style-type: none"> • More families are referred to preventive health/mental health services • Sufficient quality programs around preventive/mental health services exist to meet local needs

Aligned & Accountable Policies & Programs

FRAMEWORK ELEMENT PRIORITIZED OUTCOMES

<p>Easy access to needed Programs</p>	<ul style="list-style-type: none"> • Common applications & centralized intake processes • Eligibility restrictions reduced to accommodate more families in need • Service navigation support available to more families
<p>Effective coordination & referral network</p>	<ul style="list-style-type: none"> • More providers assess family needs & make effective cross-sector referrals • More providers across organizations work together to seamlessly address family needs • More families have smooth transitions across agencies/programs & into kindergarten
<p>Capable formal & informal providers</p>	<ul style="list-style-type: none"> • More formal & informal providers are culturally competent, knowledgeable about early child development • More formal & informal providers are skilled at using a client-centered, strengths-based approach
<p>Equitable, aligned policies & practices</p>	<ul style="list-style-type: none"> • Early learning curriculum aligned with school readiness definition across all settings • Professional development aligned with school readiness • Funders support shared outcomes • More work environments are family-friendly • More local programs aligned with shared outcomes
<p>Responsive to & respectful of family needs & voice</p>	<ul style="list-style-type: none"> • More programs offered at times & places convenient for families • More programs seek & use family input • More culturally competent practices in place • Trauma informed care engaged in every touch point
<p>Local resources leveraged & expanded to meet needs</p>	<ul style="list-style-type: none"> • Sufficient subsidies & funded slots meet needs across 0-5 continuum • Expanded prevention (vs. crisis) efforts



Foundation for Community Action

FRAMEWORK ELEMENT PRIORITIZED OUTCOMES

Shared Vision & Goals

- Increased cross-sector support for shared vision, goals & outcomes
- Greater shared accountability for action, learning & change
- More consistent messages across sectors about effective parenting & school readiness

Public Demand for Kindergarten Readiness

- Increased understanding of importance of early childhood & school readiness
- More community members advocate for high-quality early childhood experiences
- More local leaders champion targeted goals

System Awareness & Understanding

- Increased provider & family awareness of existing community services/supports
- More providers & families have access to real time information on program availability & eligibility requirements
- All providers aware of role in supporting school readiness
- More providers aware of how to use a systems approach to promote change

Continuous Improvement Orientation

- More quality outcome & program reach data available across 0-5
- More providers & stakeholders use data to drive decisions
- More real time feedback used to improve program & system functioning